



**COLLEGE OF SOCIAL WORK**  
CENTER FOR THE STUDY AND PROMOTION OF  
COMMUNITIES, FAMILIES AND CHILDREN  
2018 ANNUAL REPORT

*Engage. Invest. Respond*





# Content

**2** MESSAGE FROM THE DEAN

**3** MESSAGE FROM THE DIRECTOR

**4** ADVISORY COUNCIL

**6** LAYING THE FOUNDATION

**6** REPORT ON GIVING

**7** INVESTMENT AND INCUBATION/  
RESEARCH NEXUS

**10** AFFILIATE HIGHLIGHTS

**12** PARTNERSHIPS FLOURISH

**15** THE YEAR AHEAD

## MESSAGE FROM THE DEAN



### A POSITIVE, POWERFUL DIFFERENCE

We live in times in which the significance of rigorous, translatable and relevant research on communities, families and children can hardly be overstated. Such work makes important contributions to the scholarly record, but also informs our understanding and guides social innovation. With the inauguration of the Center for the Study and Promotion of Communities, Families and Children (CFC Center), the College of Social Work (CSW) has bolstered its focus on increasing research and strengthening partnerships. The College of Social Work's centennial year at FSU revealed a record of innovation, research excellence, community partnerships, and academic achievements which have not gone unnoticed. We are proud to report that the College of Social Work's position as a leader in learning and research has been nationally recognized, as the College is now ranked a top 25 social work program at a public university (*US News & World Report*).

Our faculty and staff are committed to quality governance, leadership and planning, which includes greater commitment to accessing external sources of funding. With the establishment of the CFC Center, we are able to create such opportunities, work in multi-disciplinary teams, take risks, and respond to community challenges.

It is my great pleasure to share the highlights of a terrific year at the CFC Center and the CSW. During the 2017–2018 academic year, we focused on building our capacity and expanding our campus and community reach. All of this would not be possible without the generosity of our donors; as well as the staff at the College of Social Work, FSU Foundation, FSU Research Foundation and the FSU Office of Research. The CFC Center is inspiring faculty and CFC Affiliates to generate scholarship and research networks. Thanks to all for making the first operational year of the CFC Center a success!

*Jim Clark*

Dean, College of Social Work

# Center for the Study and Promotion of Communities, Families and Children

Florida State University College of Social Work  
University Center 2303, Tallahassee, FL 32310  
[csw.fsu.edu/cfc-center](http://csw.fsu.edu/cfc-center)

For more information:  
850.644.3497 • [epiekalkiewicz@fsu.edu](mailto:epiekalkiewicz@fsu.edu)

*The Florida State University (FSU) Center for the Study and Promotion of Communities, Families and Children (CFC) under the aegis of the College of Social Work (CSW) was created with support of the Stoops Family Foundation, Inc. in 2017. The purpose of the CFC Center is to generate and sustain transformational knowledge for the development of effective policies, services, and usable research for the promotion of communities, families, and the children of Florida, the nation, and across the globe.*

## MESSAGE FROM THE DIRECTOR



### **BUILDING A FUTURE ON A STRONG FOUNDATION**

The year began with the College of Social Work and the FSU Foundation securing financial backing from the Stoops Family Foundation for the creation of the Center for the Study and Promotion of Communities, Families and Children (CFC Center). When I was hired in February 2018 the basic foundation of the CFC Center had been laid. In the ensuing months the vision of an operational CFC Center became a reality. During this inaugural year significant upfront investments in structure, planning and people have been made to create an environment for lasting change. The CFC Center is starting to function as a research incubator providing a support structure for faculty to pursue new research opportunities; support student research; and influence public policies. To achieve its goals,

the CFC Center relies upon five important elements that are essential for a successful research incubator: structure, people, process, metrics, and financial support.

From day one, engagement with the FSU community and beyond has been critical in establishing important relationships and the creation of the inaugural lecture series. The CFC Center in May hosted a symposium highlighting the research at FSU focused on opioid addiction.

Other notable highlights from this year include:

- The CFC Center's affiliated Multidisciplinary Evaluation and Consulting Center moved into a new state of the art research, teaching and service complex to support the high quality of services being provided to children and their families; as well as provide a research platform.
- The CFC Center's affiliated Institute for Justice Research and Development was founded by new faculty member, Dr. Carrie Pettus-Davis.
- The CFC Center assisted in three projects: Operation Family Caregiver; Gerontology Social Work; and the Social Innovation and Financial Health Project, all of which will provide increased scholarship, research, and learning opportunities.

We thank our donors; and the FSU and Tallahassee community for their interest in and support of our activities and programs. The CFC Center will continue to build on the momentum of this inaugural year and I am excited to keep raising the bar.

*Ellen Piekalkiewicz*  
Center Director

# CFC Center Goals



To maximize the research potential of the Center's four affiliates:

- Multidisciplinary Evaluation and Consulting Center
- Institute for Family Violence Studies
- Trinity Institute for the Addictions
- Institute for Justice Research and Development



To be recognized as a major national source of scholarship on communities, families and children.



To achieve a continuity and diversity of funding sources from governmental and private sources.



Foster collaboration among College of Social Work faculty along with colleagues and partners at institute of higher learning and community organizations.



To bring together practice and research professionals from many disciplines to investigate and address the needs of families, children and communities. The overarching goal of this collaborative initiative is to enhance and support individual, family and community health and wellness to create inclusive economically strong communities.

## ADVISORY COUNCIL

The CFC Center depends on the active support and expertise of its advisory council which met for an organizational meeting in March 2018 and October 2018. The Advisory Council provides a foundation of support for the CFC by:

- Serving in an advisory capacity to CFC Center staff
- Assisting in the development and sustainability of an effective network of relationships critical to the success of the CFC Center, including planning, communication, and fundraising
- Periodically reviewing organizational goals and assessment results
- Recommending strategies for program development and expansion





# Advisory Council



**Dr. Karen Randolph, Chair**

Agnes Flaherty Stoops Professor in Child Welfare



**Aggie Stoops,  
Vice-Chair**



**Lynn  
Rosenthal**



**Jeff  
Stoops**



**Keithen  
Mathis**



**Delores  
Spearman**



**Susan  
Turner**

## AD HOC:



**Jim  
Clark**



**Guy  
Spearman**



**Craig  
Stanley**



**Mario  
Jardon**



**Colette  
Podgorski**



**Maria  
Alonso**



**Ellen  
Piekalkiewicz**



**Leah  
Dienger**



**Cherie  
Rowland**

# Development Report

The CFC Center's mission to enhance the research and academic activity of the College of Social Work is primarily supported by private philanthropy. The CFC Center was created by a generous gift from the Stoops Family Foundation. In 2017-2018 the CFC Center raised \$75,000 from private donors which was then matched 1:1 by the Stoops Family Foundation. The foundation has also provided the CFC Center with additional support of \$100,000. During the year ahead, the CFC Center will continue to engage donors and alumni.

The Importance of Philanthropy:

- ★ **World-Class Faculty** – Support faculty research projects
- ★ **Promote Multidisciplinary Research Teams** – Renowned Speaker Series; Faculty Research support
- ★ **Expand Student Learning Initiatives** – Graduate student fellowships; academically excellent training opportunities for post-doctoral research and doctoral students
- ★ **Project Implementation Staff** – Enable development of grants and manage logistics of multidisciplinary teams

To make a gift, visit [csw.fsu.edu/give](https://csw.fsu.edu/give) or contact Development Director Colette Podgorski at [cpodgorski@foundation.fsu.edu](mailto:cpodgorski@foundation.fsu.edu) • 850.645.1321



## LAYING THE FOUNDATION

The CFC Center was designated in spring 2018 as a Center by the FSU Office of the Provost and secures both public and private research funds.

The CFC Center and its affiliates actively pursue research grants while emphasizing the partnerships between community-based organizations and university researchers. Service is a critical component of this work, as the research is helping solve pressing societal challenges.

College of Social Work welcomed Ellen Piekalkiewicz as the first Director of the CFC Center at the end of February 2018. Ms. Piekalkiewicz comes to FSU with more than 30 years of experience in public policy, legislative and governmental affairs, disability rights and grant writing. In her most recent position, she served as the executive director for the United Partners for Human Services, a membership organization serving human service nonprofits in the Big Bend area of North Florida.

Dr. Michael Killian has been designated at the CFC Center's Research Scientist to assist with the coordination of research and resources.

# Investment & Incubation

The CFC Center functions as a “holding company” created for the purpose of acquiring financial and intellectual assets and investing those assets in affiliated institutes, the MDC, CSW faculty and students. The CFC Center connects and develops ideas and funding and brings those assets in to enhance and capitalize on internal capabilities. The CFC Center is systematically pursuing external funding and partnerships which are guided by carefully defined targets that have been developed in consultation with the CFC Center’s advisory council.

*To facilitate a coordinated CSW approach to translational research, the CFC Center works with the following affiliates:*

**Institute for Family  
Violence Studies**

**Trinity Institute for  
Addictions**

**Multidisciplinary  
Evaluation and  
Consulting Center**

**Institute for Justice  
Research and  
Development**

*Additionally, the CFC assists in the coordination of the activities of three projects:*

## GERONTOLOGY SOCIAL WORK PROJECT

Recently the Gerontological program was expanded at the CSW due to the recent estate gift from George Abramson to establish the Gerontology Fund for the CFC Center. The purpose of this fund is to support research, education, and advancement of knowledge and technology in the areas of geriatrics, gerontology, and longevity.” During 2017-2018, the CFC Center worked with CSW faculty member, Dr. Jean Munn on a letter of inquiry to the Retirement Foundation for the Program for Social Work in Long-term Care, Phase I, to help develop curriculum for five one-hour eLearning online modules to provide training on appropriate, specific topics on issues of importance that will be accessible, free of charge, to all social workers and their designees in nursing homes throughout the United States.

## OPERATION CAREGIVER PROJECT

The FSU Operation Family Caregiver Program, in partnership with the Rosalynn Carter Institute (RCI), started in November of 2014 with an annual grant of \$80,000.00 for three years, totaling \$240,000. The CSW was chosen to house and manage the OFC program as one of the College’s service projects. The project is directed by Margaret Ashmore, MSW who speaks nationally about the role and needs of caregivers of veterans.

The mission of the FSU OFC Program is to provide free, confidential support services to caregivers of injured service members and veterans.



**OPERATION  
FAMILY CAREGIVER**

## SOCIAL INNOVATION & LEADERSHIP PROJECT

Strategic planning discussions throughout the year led to the development of a student fellowship program during the 2018–2019 academic year. The competitive fellowship requires an application and to be eligible the students had to be enrolled in two courses in the fall semester: Financial Health and Sustainable Social Work Practice. The students are also required to complete a clinical field placement.

The repositioning of the project is to include a specific emphasis on social innovation/entrepreneurship awards. The CFC has secured backing from The Jim Moran School of Entrepreneurship to submit proposal for an EIR (Entrepreneur in Residence). These EIR’s have placed in departments and colleges across campus. FSU is transforming into “The Entrepreneurial University” and the Entrepreneur in Residence (EIR) program is a key component of this initiative.

*“As an Entrepreneurship Fellow I have learned how to be an innovative thinker within the realm of Social Work.” - NATALIE JONES*

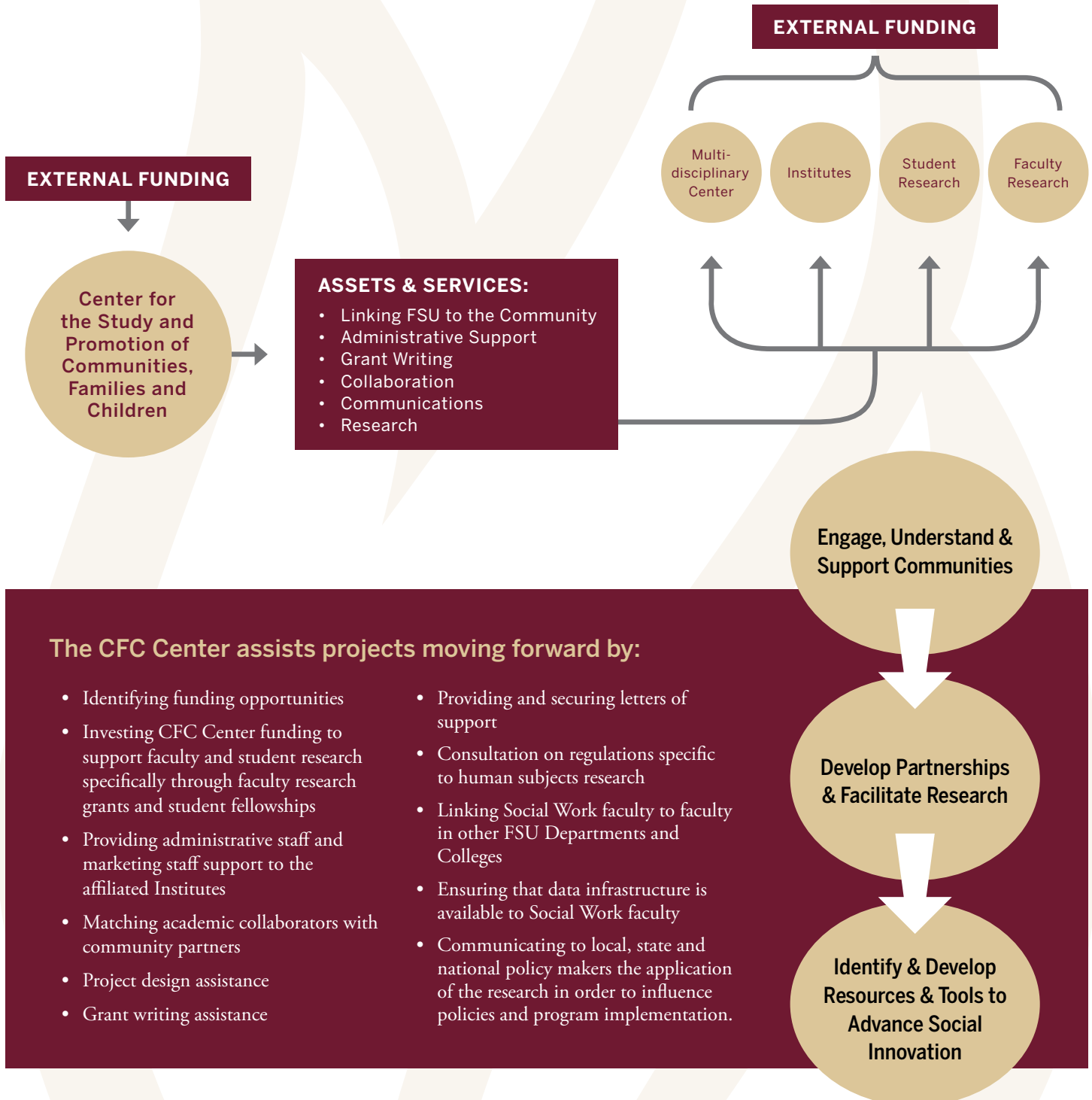
*“Being an Entrepreneurship Fellow—it’s little bit of expanding your mind and a lot of expanding your success” - QUNEISHA LIVINGSTON*



# Investment & Incubation cont.

Each affiliate has its own director who manages projects, grants, and coordinates project activities with faculty affiliates and graduate students.

The CFC Center operates the College's research nexus to align and leverage research connections across FSU; as well as focusing on an inter-disciplinary approach to social innovation research; and building regional and statewide connections to incorporate research.





# Affiliate Highlights

## MULTIDISCIPLINARY EVALUATION AND CONSULTING CENTER (MDC)

Dr. Anne Selvey, Director

Joann Milford, Assistant Director

**MDC.FSU.EDU**

The MDC was established in 1983 through a grant from the Florida Department of Education and is under the direction of the FSU College of Social Work. It is a university-based diagnostic and training center that services school-aged children with a variety of education, medical and behavioral health issues.

In March 2018, the MDC held an open house to celebrate its new state of the art research, teaching and clinic 7,000 square foot complex located just west of the main campus. The event, attended by more than 100 FSU and community partners featured a presentation about the MDC and tours of the facility. The new site is equipped with testing and observation rooms, a conference room, a space for group therapy sessions and a reception area to support the high quality of services being provided to children and their families; as well as provide a research platform. The new building is going to allow research to be conducted that would not have been feasible at the old location.

To demonstrate the research potential of the MDC to the broader FSU community, the CFC Center hosted research dialogues in the spring and summer of 2018. The dialogue helped identify the research infrastructure that will be needed to enhance and develop the research environment to increase scholarly inquiry and engagement.

As a result of the discussions several strengths of the MDC were identified:

- ♥ Fully automated clinical recording systems
- ♥ Two-way window observation rooms
- ♥ 20 years of clinical data
- ♥ High number of clients
- ♥ Interest in research by MDC staff particularly if the research informs better practice

Progress is being made—research partnerships are forming—in 2017-2018, Dr. Karen Randolph established a small research presence at the MDC. Her research project *The Use of Information and Communication Technology (ICT) among Child Welfare Workers in Florida and Estonia*, will examine the use of information and communication technology, as well as attitudes, experiences, and ICT-related outcomes among child welfare workers in Florida and Estonia. Dr. Randolph interviewed MDC clinical staff to determine how they use ICT and to pilot test interview protocol and questions.



MDC Open House in March 2018 with the Tallahassee Chamber of Commerce ribbon cutting



# Affiliate Highlights

## INSTITUTE FOR JUSTICE RESEARCH AND DEVELOPMENT (IJRD)

Dr. Carrie Pettus-Davis, Director

Dr. Stephen Tripodi, Associate Director

Dr. Tanya Renn, Assistant Director

IJRD was launched in 2018 with the aim of advancing science, policy, and practice to improve the well-being of individuals and families impacted by criminal justice involvement. Research activities at IJRD span the criminal justice system from reform research and prosecutor offices to reentry of people from prisons back to communities. The flagship project of IJRD is a study occurring in 50 prisons across four states with nearly 2,000 people reentering 12 rural and urban communities in those states. During the first half of 2018, significant staff time of the CFC Center and College of Social Work was spent on submitting the necessary paperwork to the FSU Office of the Provost officially designating IJRD as a FSU research institute; hiring IJRD staff and securing office space.

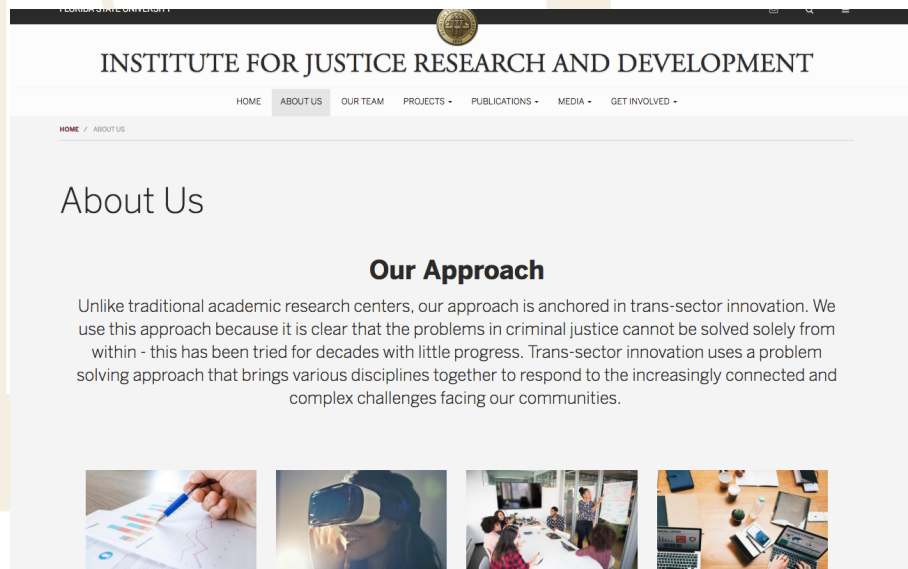
IJRD will make a significant contribution to the research on deincarceration and provides opportunities for student engagement. During Spring 2018, IJRD provided research opportunities for one doctoral student, 10 Master's level students; and 11 undergraduates.

[IJRD.CSW.FSU.EDU](http://IJRD.CSW.FSU.EDU)



Dr. Pettus-Davis, came to FSU from the Brown School at Washington University in St. Louis where she was the founder and director of center-based initiatives focused on criminal justice innovations. She also co-leads the Promote Smart Decarceration Grand Challenge network—one of the 12 Grand Challenges for

Social Work identified by the American Academy of Social Work and Social Welfare. Through her research and initiatives, Pettus-Davis has engaged a growing base of policymakers, business leaders, funders, advocates, practitioners, formerly incarcerated individuals and scholars in criminal justice innovations for debate and testing.



*“Criminal justice reform is a crucial civil rights issue for tens of thousands of Americans who have been swept up in the era of mass incarceration and Dr. Pettus-Davis’ empirical research to test an innovative model for re-entry is a significant step toward healing and hope for those men and women and their families.”*

**JIM CLARK, DEAN OF THE COLLEGE OF SOCIAL WORK**



## INSTITUTE FOR FAMILY VIOLENCE STUDIES (IFVS)

Karen Oehme, J.D., Director

Ann Perko, J.D. Director of Policy and Special Projects

The Institute for Family Violence Studies (IFVS) creates large scale web-based trainings and advocates for supportive legislative policy solutions and systems that promote healthy, resilient families and reduce all forms of family and intimate partner violence. The goal of the Institute is to be a national resource for trauma-informed services to improve safety, resilience, and well-being for individuals and families.

IFVS activities include:

- Building national-scale research-based training projects and adding to the knowledge base on supervised visitation, first responders, co-parenting after divorce, trauma-informed care, and healthy relationships;
- Promoting effective policy and legislative solutions for reducing family violence, supporting sexual and gender minorities, and advocating for healthy individuals and families;

Expanding and strengthening the infrastructure of the IFVS has been a priority for the CFC -- holding strategic sessions with Institute staff on commercialization; a communication/marketing plan; and seeking letters of support for Florida Blue grant

## FAMILYVIO.CSW.FSU.EDU

submission. The Institute is well-poised to discover new avenues for research—including the U.S. military—on the links among family violence, Adverse Childhood Experiences, and adult mental health.

The highlight of 2017-2018 for the IFVS has been the development work on the FSU Student Resilience Project which received necessary seed-level funding from the CFC. During 2017-2018, the Institute developed an online, evidence-informed trauma resilience training tool—FSU Student Resilience Project. The Resilience Project, with support from FSU President John Thrasher, Provost and FSU Executive Vice-President for Academic Affairs Sally McRorie, and the President's Cabinet, represents FSU and the College of Social Work's strong commitment to promote student success, health and wellness. The online tool is designed to supplement University educational and counseling interventions and is intended to destigmatize mental health issues and encourage help-seeking.

In the fall of 2018, the IFVS fully launched the training, which will be recommended for all of FSU's 6,000 incoming freshmen and transfer students. The project is online at [Strong.fsu.edu](http://Strong.fsu.edu).

# STUDENT RESILIENCE PROJECT

YOU DESERVE  
TO BE HEALTHY!



### Want to learn to manage stress in healthy ways?

The Student Resilience Project is a web-based, research-informed toolkit to encourage students' wellness by helping them learn to manage stress in healthy ways and increase their sense of belonging. The website features videos, skill-building activities, resources and information, including podcasts by campus experts.

Learn more at [strong.fsu.edu](http://strong.fsu.edu) • FSU College of Social Work • 850.644.1715

# Partnerships Flourish

As the CFC Center gained momentum, it forged strong partnerships within the CSW and other FSU colleges and departments; as well as with the nonprofit community.

## OPIOID EDUCATION AND RESEARCH EVENT – COLLABORATION WITH ALLIED AGAINST OPIOID ABUSE

During the Substance Abuse and Mental Health Administration’s designated national prevention week in May, the CFC Center partnered with Allied Against Opioid Abuse to spotlight research being conducted at CSW, College of Medicine and College of Nursing on the opioid epidemic. The event was attended by over 70 FSU researchers, students, youth and elder advocates, behavioral health professions, law enforcement and others.

### Education and Research Event Speakers:



#### PREGNANT WOMEN

**Samantha Goldfarb**,  
Assistant Professor,  
College of Medicine

*“One of the biggest barriers I think we face in the United States is that despite prevention, treatment and policy efforts, we are still surrounded by the stigma of substance abuse in this country. This is especially true for vulnerable, pregnant women who engage in substance abuse or are already addicted and most times don’t even know they’re pregnant.”*



#### OLDER ADULTS

**Jean Munn**, Associate  
Professor, College of  
Social Work

*“Older adults actually have the perfect storm for opioid abuse. Older adults have many chronic conditions. They live a lot longer but don’t necessarily live comfortably. Because older adult bodies process medicine differently from the rest of the population, they are at higher risk of overdosing.”*



#### COMMUNITY CARE

**Eugenia Millender**,  
Associate Professor,  
College of Nursing

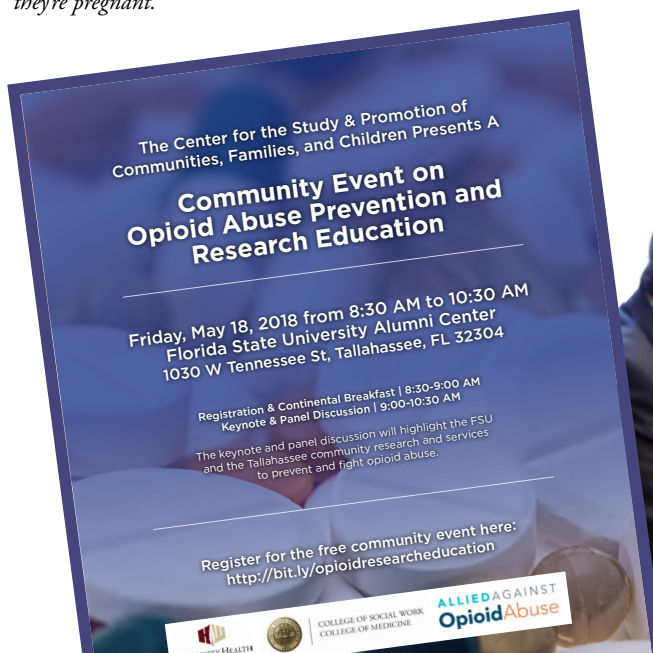
*“Among many things, nurses are very good for educating. We take our time, we educate, we look at the person and whole community they come with. Individuals don’t come by themselves. They come with their own identified beliefs and cultural behaviors. It’s important for clinicians to treat the individual, their community and their beliefs.”*



#### POLICY/ADVOCACY

**Ellen Piekalkiewicz**, Director,  
FSU Center for the Study and  
Promotion of Communities,  
Families and Children,  
College of Social Work

*“Opioids are very important in modern medicine. They have improved the quality of life particularly for people with cancer and acute pain. However, we must educate people that they shouldn’t just take that prescription because it’s part of the checkout process at hospitals after surgery. We must educate individuals to take charge and push for alternatives.”*







## COMMUNITY PARTNERSHIPS

The CFC Center Director was a member of the planning team for City of Tallahassee Mayor Gillum's Family First Summit which took place in April 2018 which helped identify topics and speakers to present during the summit. This enabled the CFC Center to connect with the community and assist the community in advancing ideas grounded in best practice research.

The CFC Center Director also serves as the FSU representative on the Leon County Citizen Advisory Council which meets every other month. Established in May 2017 by Leon County Sheriff Walt McNeil, the Council serves to facilitate positive relationship, communication, and feedback between community-at-large and the Leon County Sheriff.

## FSU PARTNERSHIPS

The CSW Dean and CFC Center Director serve on a Clinical and Translational Research Awards (CTSA) Program workgroup who are joined by representatives from the College of Medicine, College of Nursing, and Department of Psychology. The workgroup meets to design FSU strategies to increase the FSU research profile in researching behavioral healthcare interventions and translational research.



Tallahassee Mayor Andrew Gillum speaks at Community Summit on Children

# Next Steps and



## **FACULTY RESEARCH MULTI-DISCIPLINARY MATCHING GRANTS**

The CFC Center will commence planning to establish a competitive program that provides funds to support and encourage individual faculty members to form multidisciplinary teams to secure proof of concept, with a goal of successfully competing for future sponsored research opportunities.



## **CFC RESEARCH COMMITTEE**

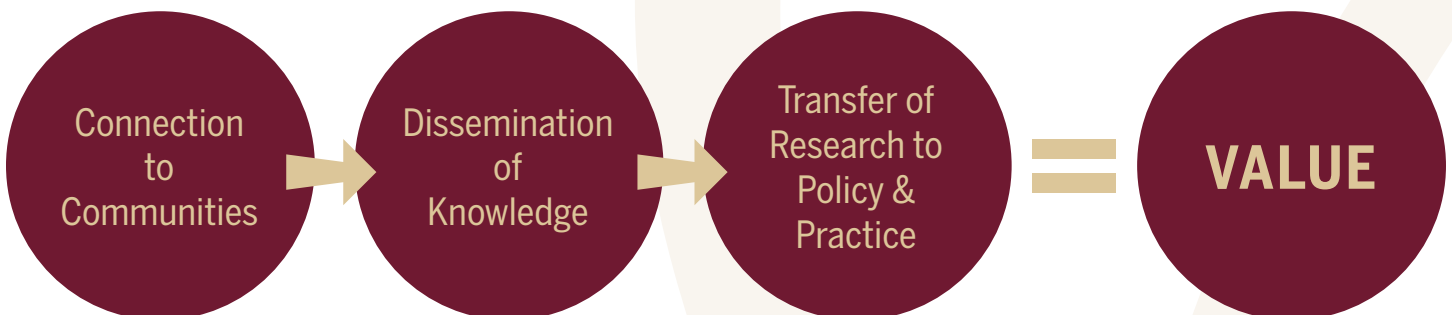
The CFC Center will establish a research and education advisory council comprised of CFC Center Affiliates and CSW faculty; chaired by Dr. Carrie Pettus-Davis.



## **CFC ADVISORY COUNCIL**

The CFC Center Advisory Council will meet on March 29 to review the CFC Center strategic direction, communications/marketing blueprint; and fundraising plan. As part of its work and its October 26 meeting, the Council discussed key performance measures that will guide the success of the CFC Center.

The CFC Center has made substantial progress during its inaugural year and will continue to be guided by Dean Clark and the CFC Center Advisory Council challenging the CFC Center to create exceptional value.





# the Year Ahead

## RESEARCH LECTURE SERIES, SEPTEMBER 2018–MARCH 2019

In Fall 2018, the CFC Center launched its inaugural research lecture series featuring university researchers from FSU and other institutions. The lectures by university researchers will:

- Feature engaging and interactive lectures and workshops based around current themes of research crucial for contemporary social problems.
- Foster interdisciplinary collaborations by providing a venue for researchers to meet and discuss their work.
- Connect the key community stakeholders with FSU faculty; and distinguished researchers from other universities.



INAUGURAL RESEARCH LECTURE SERIES

2018–2019

# ENGAGE, INVEST, RESPOND

**FRIDAY, SEPTEMBER 28, 3:00 P.M. – 4:00 P.M.**

**Substance Use During Pregnancy: Time for Policy to Catch Up with Research**

*UNIVERSITY CENTER BUILDING C, ROOM 5301*

**DR. SAMANTHA GOLDFARB**

*FSU College of Medicine & College of Human Sciences*

**WEDNESDAY, NOVEMBER 28, 3:00 P.M. – 4:30 P.M.**

**Assessing and Addressing the Hidden Crime of Stalking**

*FSU ALUMNI CENTER, RENDINA ROOM*

**DR. T.K. LOGAN**

*University of Kentucky, Center on Drug and Alcohol Research*

**FRIDAY, JANUARY 25, 3:00 P.M. – 4:00 P.M.**

**The JAMA Fiasco: Conflicts-of-Interest, Academic Freedom, and Free Speech**

*FSU COLLEGE OF MEDICINE, COLLEGE OF MEDICINE AUDITORIUM*

**DR. JONATHAN LEO**

*DeBusk College of Osteopathic Medicine, Lincoln Memorial University*

**DR. JEFFREY R. LACASSE**

*FSU College of Social Work*

**FRIDAY, MARCH 29, 3:00 P.M. – 4:00 P.M.**

**Examining the Relationship Between Childhood Victimization, High-Risk Behaviors, and Health Among Criminal Justice-Involved Women**

*UNIVERSITY CENTER BUILDING C, ROOM 5301*

**DR. TANYA RENN**

*FSU College of Social Work*

**DR. MICHELE STATON**

*University of Kentucky, College of Medicine*

# ENGAGE INVEST RESPOND



Center for the Study and Promotion of  
Communities, Families and Children

Florida State University College of Social Work  
University Center 2303, Tallahassee, FL 32310

[csw.fsu.edu/cfc-center](http://csw.fsu.edu/cfc-center)  
850.644.3497